

T H E H E A R I N G B O O K

AUDIA

P R O D U C T C A T A L O G

INNOVATION AND SUSTAINABILITY AS STANDARD



AUDIA AKUSTIK GMBH is a future-orientated company that is continuously committed to the development of innovative and sustainable products. In the future, we will continue to work on solutions that fulfil the highest standards of quality, comfort and safety. Our commitment to advanced technologies and environmentally friendly practices ensures that we meet the needs of our customers while making a positive contribution to society.

Yours sincerely, Lars Kraft

Managing Director

THE AUDIA PRODUCT WORLD FOR YOU AND YOUR CUSTOMERS

Welcome to AUDIA – for over 30 years, tradition and innovation have gone hand in hand with us. We stand for high-quality craftsmanship and excellent design. Discover our products, which redefine your listening experience through precise technology and premium materials.

AUDIA

CONTENT CATALOG

EDITORIAL



A HEART FOR EARS

We develop and produce earmolds, hearing protection, and headphones with the highest standards. For over 30 years, with passion and craftsmanship.

6 —→ **11**

EARMOLDS



CUSTOM EARMOLDS

The entire world of AUDIA earmolds.
Custom ear pieces for hearing systems.

12 —→ **37**

Products _____ 14

Order Options _____ 32

HEARING PROTECTION



CUSTOM HEARING PROTECTION

Custom-made hearing protection for optimal safety in noisy environments.

38 —→ 61

Supply Process and Selection Criteria	40
Products	42
Order Options	56
Accessories	58
Serial Hearing Protection	60

HEADPHONES



IN-EAR HEADPHONES

AUDIA In-Ear headphones for a completely new sound experience and a perfect fit in the ear.

62 —→ 65

COLOR OVERVIEW

All colors at a glance

68 —→ 69





MADE IN THURINGIA, TO UNDERSTAND THE WORLD.

From the heart of Germany to many countries. With over 3,000 acoustic partners, we are among Europe's largest earmold manufacturers. Every day, we create unique products with a passion for better hearing.

OUR RECIPE FOR THE FUTURE: **LISTENING.**



„Those who listen learn the essential things.“ The ability and willingness to listen is not just a phrase for us but a cornerstone of our interactions – within the team and with our customers.

With this recipe for success, AUDIA has been thriving in the market for over 30 years. To keep it that way, we continuously invest in the training of our employees, encourage open exchange, and always develop our products in dialogue with the needs of our customers. This ensures our future position as a reliable partner for high-quality and innovative solutions.



Our work at AUDIA is based on the highest precision and an uncompromising commitment to quality. In our in-house manufactory, we use state-of-the-art technologies to create perfect solutions for every need. Whether in the field of ear molds, custom hearing protection, or the production of high-quality headphones – each of our products is made with the utmost care and craftsmanship. This ensures a reliable standard that our customers can trust.



QUALITY MADE IN GERMANY.

AUDIA is a team of acousticians, engineers, business professionals, and technicians who work with passion and enthusiasm on cutting-edge hearing solutions.





The interplay of all actors is reflected in each of our products. Every day, we create unique individual solutions for you and your customers. In our training center, we also convey theoretical and practical content of our range.

We are advocates of continuous improvement and believe in the power of this philosophy. At AUDIA, we have a solid foundation of quality and know-how, which gives us confidence and allows us to remain open to innovations and continuously build upon them.





EARMOLDS

UNIQUE,
LIKE THE
HUMAN
EAR.

AUDIA's goal is to create earmolds that deliver the full acoustic potential of the hearing system, are barely noticeable, and aesthetically impress at the highest level.

EARMOLD DESIGNS

Variety in form and function meets
aesthetically pleasing solutions.

COMFORT-EARMOLDS *Page 14*



20 Skeleton



25 Shell



26 Claw



28 Hook



29 Canal style



31 Hollow earmold



31 Hollow earmold lite



39 HOKA®

RIC EXTERNAL RECEIVER EARMOLDS *Page 18*



32 CIC RIC



32 CIC RIC lite



36 ITC RIC



36 ITC RIC lite



68 RIC-IO shell

MINI-TUBE EARMOLDS *Page 22*



32 CIC click tube



32 CIC click tube lite



36 ITC click tube



36 ITC click tube lite



64 CIC fix tube



65 ITC fix tube

BASIC EARMOLDS & SPECIAL SHAPES *Page 24*



01 Compact shell



02 Compact canal-style



11 Retaining earmold T-mic



37 Open tube



90 Support earmold



Blank

COMFORT EARMOLDS

Elegant designs paired with functionality and high practical value.



20 SKELETON

The skeleton mould is the most commonly produced earmold shape. It provides good ventilation for the ear and is very comfortable to wear, while at the same time being very visually appealing. The skeleton earmold is suitable for mild to severe hearing loss.

MATERIAL	FOTOTEC®, ACRYLIC, AUDIASOFT AS 40/70, THERMOTEC®, TITAN
COLOURS	WIDE CHOICE OF COLOURS AND DESIGNS
OPTIONS	SURFACES, VENT, HEARING TUBE, CANAL LENGTH, LASER ENGRAVING ETC.

25 SHELL *(with perforated and half-shell options)*

The shell shape is very well suited for more acute hearing loss; all sealing and support areas are available. The design is very sturdy. Also available in 3x perforated form or as a half shell. The perforated shell cannot be produced in AS 25.

MATERIAL	FOTOTEC®, ACRYLIC, AUDIASOFT AS 25/40/70, THERMOTEC®, TITAN
COLOURS	WIDE CHOICE OF COLOURS AND DESIGNS
OPTIONS	SURFACES, VENT, HEARING TUBE, CANAL LENGTH, LASER ENGRAVING ETC.



Note

If for anatomical reasons the required hearing tube cannot be fitted, the earmold will be prepared for an appropriate angle fitting as standard. Hearing tube and angle are enclosed separately.



26 CLAW

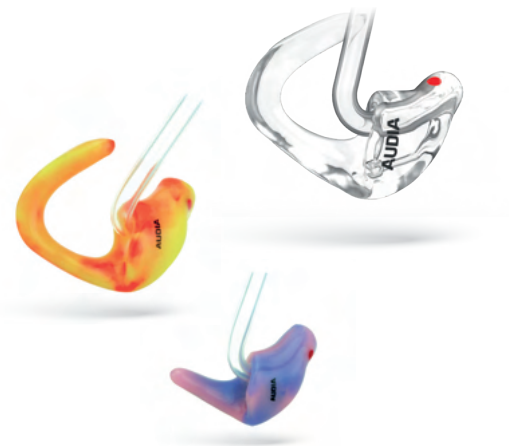
The elegant claw earmold is barely visible, aesthetically appealing and is very comfortable to wear. The support is in the areas of the antitragus and cymba conchae, thus creating little skin contact in the concha. Well suited to concha that flatten out.

MATERIAL	FOTOTEC®, ACRYLIC, AUDIASOFT AS 70, THERMOTEC®, TITAN
COLOURS	WIDE CHOICE OF COLOURS AND DESIGNS
OPTIONS	SURFACES, VENT, HEARING TUBE, CANAL LENGTH, LASER ENGRAVING ETC.

28 HOOK *(long/short)*

The hook earmold is visually attractive due to its elegant design and is barely visible. Depending on the shape of the antitragus, a long or short hook can be chosen.

MATERIAL	FOTOTEC®, ACRYLIC, AUDIASOFT AS 70, THERMOTEC®, TITAN
COLOURS	WIDE CHOICE OF COLOURS AND DESIGNS
OPTIONS	SURFACES, VENT, HEARING TUBE, CANAL LENGTH, LASER ENGRAVING ETC.



Note If for anatomical reasons the required hearing tube cannot be fitted, the earmold will be prepared for an appropriate angle fitting as standard. Hearing tube and angle are enclosed separately.

COMFORT EARMOLDS

Elegant designs paired with functionality and high practical value.



29 CANAL STYLE

The canal-style earmold fits inconspicuously in the ear canal, so meets the highest cosmetic standards. An anatomically pronounced ear canal (1st + 2nd bend) is required for it to be fixed in place.

MATERIAL	FOTOTEC®, ACRYLIC, AUDIASOFT AS 25/40/70, THERMOTEC®
COLOURS	WIDE CHOICE OF COLOURS AND DESIGNS
OPTIONS	SURFACES, VENT, HEARING TUBE, CANAL LENGTH, LASER ENGRAVING ETC.

31 HOLLOW EARMOLD

(with support as an option)

Manufactured as a thin-walled plastic film, this earmold is visually discreet with improved thermal conductivity. The optional supports are available in a range of different forms.

MATERIAL	FOTOTEC®, ACRYLIC, AUDIASOFT AS 70, THERMOTEC®, TITAN
COLOURS	WIDE CHOICE OF COLOURS AND DESIGNS
OPTIONS	SUPPORT, SURFACES, VENT, HEARING TUBE, CANAL LENGTH, LASER ENGRAVING ETC.



Note

If for anatomical reasons the required hearing tube cannot be fitted, the earmold will be prepared for an appropriate angle fitting as standard. Hearing tube and angle are enclosed separately.



31 HOLLOW EARMOLD LITE

(with support as an option)

Corresponds to 31 hollow earmold with gradual reduction of contact surfaces through large lateral openings in the canal. This minimises the sensation of a foreign body being present, and supports a natural climate in the ear canal.

MATERIAL	FOTOTEC®, ACRYLIC, AUDIASOFT AS 70, THERMOTEC®, TITAN
COLOURS	WIDE CHOICE OF COLOURS AND DESIGNS
OPTIONS	SUPPORT, SURFACES, VENT, HEARING TUBE, CANAL LENGTH, LASER ENGRAVING ETC.

39 HOKA® *(with support as an option)*

In the hollow duct earmolds, depending on the shape, the residual volume is expanded through the use of film on the canal side, improving the high tone transmission characteristics of the hearing system. The optional supports are available in a range of different forms.

MATERIAL	FOTOTEC®, THERMOTEC®, AUDIASOFT AS 70, TITAN
COLOURS	WIDE CHOICE OF COLOURS AND DESIGNS
OPTIONS	SUPPORT, SURFACES, VENT, HEARING TUBE, CANAL LENGTH, LASER ENGRAVING ETC.



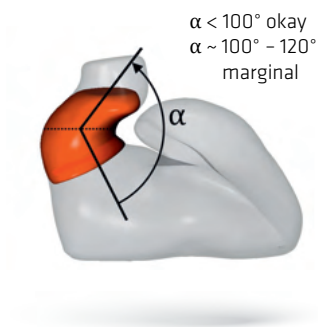
Note

If for anatomical reasons the required hearing tube cannot be fitted, the earmold will be prepared for an appropriate angle fitting as standard. Hearing tube and angle are enclosed separately.

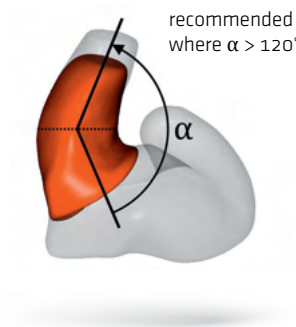
RIC EXTERNAL RECEIVER EARMOLDS

High-quality earmolds and click-on earmolds for all external receiver systems.

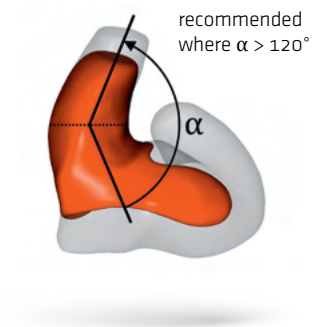
When selecting a suitable design, certain requirements concerning the ear impression or canal shape must be taken into consideration. If the internal angle at the first bend is less than 100° , it offers good support for a 32 CIC RIC. At 100° – 120° , the support is marginal. If the angle is above 120° , we recommend a 36 ITC RIC, potentially with an additional support.



32 CIC RIC

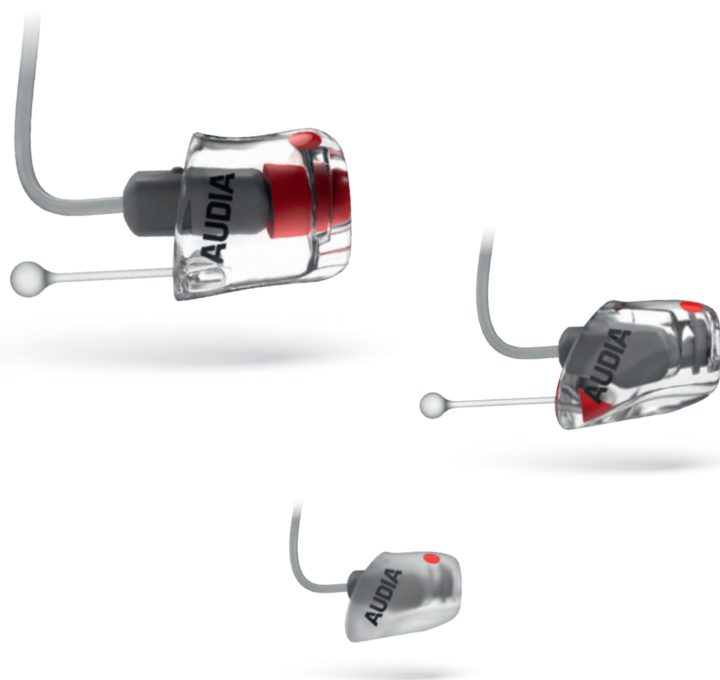


36 ITC RIC



36 ITC RIC with support

This principle also applies to mini-tube earmolds. When ordering, please always state the manufacturer and the official name and size (S/M/L) of the required external receiver system. The earmolds are made as foil earmolds as standard, but on request they can also be produced as complete versions (although by way of exception, 32 CIC RIC in silicone is always produced as a complete version). You can find an up-to-date overview of the available external receiver systems with the corresponding options in our EASYORDER online order system.



32 CIC RIC

The external receiver earmold 32 CIC RIC is very small and discreet as it sits deep in the ear canal. The manufacturer-specific click jacks are fitted (Fototec® only – press fit with THERMOTec® and Audia-soft), so the receiver is easy to install. The earmold is supplied with Removal line as standard.

MATERIAL	FOTOTEC®, AUDIASOFT AS 70, THERMOTEC®, TITAN
COLOURS	WIDE CHOICE OF COLOURS
OPTIONS	SURFACES, LASER ENGRAVING, VENT, SOLID MATERIAL ETC.

32 CIC RIC LITE

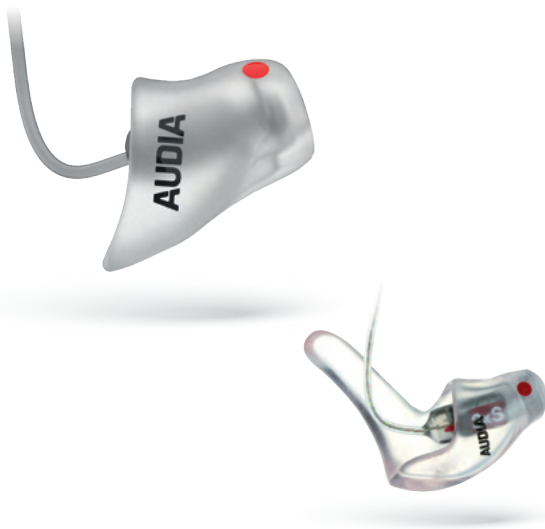
As 32 CIC RIC with gradual reduction of contact surfaces through large lateral openings in the canal. This minimises the sensation of a foreign body being present, and supports a natural climate in the ear canal.

MATERIAL	FOTOTEC®, THERMOTEC®, TITAN
COLOURS	WIDE CHOICE OF COLOURS
OPTIONS	SURFACES, LASER ENGRAVING, VENT ETC.



RIC EXTERNAL RECEIVER EARMOLDS

High-quality earmolds and click-on earmolds for all external receiver systems.



36 ITC RIC *(with support as an option)*

The external receiver earmold 36 ITC RIC provides greater grip in the ear canal and can be extended with a support in the concha area as an option. The manufacturer-specific click jacks are fitted (Fototec® only – press fit with THERMOTec® and Audiasoft), so the receiver is easy to install.

MATERIAL	FOTOTEC®, AUDIASOFT AS 70, THERMOTEC®, TITAN
COLOURS	WIDE CHOICE OF COLOURS
OPTIONS	SUPPORT, REMOVAL LINE, SURFACES, VENT, LASER ENGRAVING, SOLID MATERIAL ETC.



36 ITC RIC LITE *(with support as an option)*

As 36 ITC RIC with gradual reduction of contact surfaces through large lateral openings in the canal. This minimises the sensation of a foreign body being present, and supports a natural climate in the ear canal.

MATERIAL	FOTOTEC®, AUDIASOFT AS 70, THERMOTEC®, TITAN
COLOURS	WIDE CHOICE OF COLOURS
OPTIONS	SUPPORT, REMOVAL LINE, SURFACES, VENT, LASER ENGRAVING ETC.

68 RIC-IO SHELL *(with support as an option)*

The 68 RIC-IO shell with receiver is a special shell in a compact design for powered external receivers. The earpiece is securely fitted in the shell and cannot be changed. This design is especially suited to powered external receivers that can be permanently fixed in place. The receiver is provided by AUDIA at additional cost and securely fitted in the earmold.

MATERIAL	FOTOTEC®, TITAN
COLOURS	WIDE CHOICE OF COLOURS
OPTIONS	SUPPORT, SURFACES, VENT, LASER ENGRAVING ETC.



SOLUTIONS FOR FLEXIBLE RECEIVER ADJUSTMENT

AUDIA offers various flexible solutions for adding in a receiver for comparative adjustment to the 32 CIC RIC and 36 ITC RIC shapes.



SMARTSOCKET

The SmartSocket, which is not system-dependent, is suitable for the attachment of various external receivers with appropriate supports. Two standard sizes are available (the sockets for both options are identical): The S/M size imitates fitting in the ear with a universal S/M receiver size. The P size imitates fitting in the ear with a universal P receiver size.

MATERIAL FOTOTEC®, THERMOTEC®, TITAN

MULTIFIX

In the Multifix system, instead of a specific earpiece jack, a flexible sleeve is built into the earmold. This sleeve can store various external receivers (around 80% of all types on the market), allowing comparative adjustment. To order, simply specify Multifix as the earpiece type. The Multifix sleeve is enclosed.

MATERIAL FOTOTEC®, THERMOTEC®, TITAN



MINI-TUBE EARMOLDS

Earmolds for all mini-tube systems in various designs as click-on or attach variants.



32 CIC CLICK TUBE

The 32 CIC click tube mini-tube earmold is very small and discreet as it sits deep in the ear canal. Transparent click jacks are fitted (Fototec® only – press fit with THERMOTec® and Audiasoft), so the receiver is easy to install. The earmolds are supplied with Removal line (for Fototec® and Audiasoft) as standard.

MATERIAL	FOTOTEC®, AUDIASOFT AS 70, THERMOTEC®, TITAN
COLOURS	WIDE CHOICE OF COLOURS
OPTIONS	SURFACES, VENT, LASER ENGRAVING ETC.



32 CIC CLICK TUBE LITE

As 32 CIC Click Tube with gradual reduction of contact surfaces through large lateral openings in the canal. This minimises the sensation of a foreign body being present, and supports a natural climate in the ear canal.

MATERIAL	FOTOTEC®, THERMOTEC®, TITAN
COLOURS	WIDE CHOICE OF COLOURS
OPTIONS	SURFACES, VENT, LASER ENGRAVING ETC.

36 ITC CLICK TUBE *(with support as an option)*

The 36 ITC click tube mini-tube earmold provides greater grip in the ear canal and can be extended with a support in the concha area as an option. Transparent click jacks are fitted (Fototec® only – press fit with THERMOTec® and Audiasoft), so the receiver is easy to install.

MATERIAL	FOTOTEC®, AUDIASOFT AS 70, THERMOTEC®, TITAN
COLOURS	WIDE CHOICE OF COLOURS
OPTIONS	SUPPORT, SURFACES, VENT, LASER ENGRAVING ETC.





64 CIC FIX TUBE

This special earmold is similar to the 32 CIC click tube and is used in narrow ear canals where the connectors for attaching the tubes cannot be fitted. Because of the lack of space, the mini tube must therefore be attached with adhesive. The earmolds are supplied with Removal line (for Fototec® and Audiasoft) as standard.

MATERIAL	FOTOTEC®, AUDIASOFT AS 70, THERMOTEC®
COLOURS	WIDE CHOICE OF COLOURS
OPTIONS	SURFACES, VENT, LASER ENGRAVING ETC.

36 ITC CLICK TUBE LITE

(with support as an option)

As 36 ITC Click Tube with gradual reduction of contact surfaces through large lateral openings in the canal. This minimises the sensation of a foreign body being present, and supports a natural climate in the ear canal.

MATERIAL	FOTOTEC®, AUDIASOFT AS 70, THERMOTEC®, TITAN
COLOURS	WIDE CHOICE OF COLOURS
OPTIONS	SUPPORT, SURFACES, VENT, LASER ENGRAVING ETC.



65 ITC FIX TUBE *(with support as an option)*

This special earmold is similar to the 36 ITC click tube and is used in narrow ear canals where the connectors for attaching the tubes cannot be fitted. Because of the lack of space, the mini tube must therefore be attached with adhesive.

MATERIAL	FOTOTEC®, AUDIASOFT AS 70, THERMOTEC®
COLOURS	WIDE CHOICE OF COLOURS
OPTIONS	SUPPORT, SURFACES, VENT, LASER ENGRAVING ETC.



Note

For optimum grip with the selected design, the same conditions for ear casts and canal shape apply as for external receiver earmolds. When ordering, please state the manufacturer and the official name of the required mini-tube system.

BASIC EARMOLDS AND SPECIAL SHAPES

Standard earmolds in a simple design and custom-made special shapes.



01 COMPACT SHELL / 02 COMPACT CANAL-STYLE

The 01 Compact shell and the 02 Compact canal-style are suitable as basic earmolds or replacement earmolds for repair purposes.

MATERIAL	FOTOTEC®, AUDIASOFT AS 25/40/70
COLOURS	WIDE CHOICE OF COLOURS
OPTIONS	NONE

BLANK MADE WITH/WITHOUT CAST

We are happy to provide you with earmold blanks for your own processing and for training purposes. The blanks can be manufactured as typical ears or to individual ear casts.

MATERIAL	FOTOTEC®, ACRYLIC
COLOURS	TRANSPARENT, TRANSPARENT PINK
OPTIONS	NONE





11 RETAINING EARMOLD T-MIC

This special open retaining earmold is used for positioning the external microphone with suitable CI systems.

MATERIAL FOTOTEC®, AUDIASOFT AS 40/70, THERMOTEC®

COLOURS WIDE CHOICE OF COLOURS

OPTIONS SURFACES, LASER ENGRAVING ETC.



37 OPEN TUBE

Given its function as a simple tube holder, this shape is contoured only around small areas of the tragus and outer ear. As it is fully open, it is an appropriate solution for CROS or CI systems. If a short canal is selected, it is secured to the bridge of the tragus by the projecting hearing tube (without pegs).

MATERIAL FOTOTEC®, AUDIASOFT AS 70, THERMOTEC®

COLOURS WIDE CHOICE OF COLOURS

OPTIONS SURFACES, HEARING TUBE, CANAL LENGTH, LASER ENGRAVING

90 SUPPORT EARMOLD

(with support as an option)

Thin film walls, open in both directions, for use as permanent support for the ear canal tissue.

MATERIAL FOTOTEC®, AUDIASOFT AS 70, THERMOTEC®

COLOURS WIDE CHOICE OF COLOURS

OPTIONS REMOVAL LINE, SUPPORT, SURFACES, CANAL LENGTH, LASER ENGRAVING



AUDIA FASHION AND JUNIORLINE

Comfortable Earmolds with elegant, extravagant, bold colours and designs for the ear.



Juniorline - J B



Juniorline - J A



Juniorline - J C



Juniorline - J D



Juniorline - J E



Juniorline - J F



Juniorline - J G



Juniorline - J H



Juniorline - J I

JUNIORLINE

SHAPE	COMFORT EARMOLD
MATERIAL	FOTOTEC®, ACRYLIC, AUDIASOFT AS 25/40/70, THERMOTEC®, TITAN
COLOURS	WIDE CHOICE OF COLOURS
DESIGN	APPLICATIONS J A- J I



J A Heart



J B Ladybird



J C Smiley



J D Football



J E Dinosaur



J F Elephant



J G Penguin



J H Unicorn



J I Car

The applications are inserted into the hearing tube and are replaceable.



RHINESTONE DESIGN

SHAPE COMFORT, RIC, MINI-TUBE EARMOLDS

MATERIAL FOTOTEC®, ACRYLIC

COLOURS WIDE CHOICE OF COLOURS

DESIGN RHINESTONE INSERT – VARIOUS SIZES:

SIZE 1 C. 2 MM,

SIZE 2 C. 3 MM,

SIZE 3 C. 4 MM,

VARIOUS COLOURS



Please outline the colours and sizes of the stones and their arrangement. For anatomical reasons, it may not be possible to incorporate all sizes of stone.



MOTIVDESIGN

FORM COMFORT EARMOLDS

MATERIAL FOTOTEC®, TITAN

FARBEN WIDE CHOICE OF COLOURS

DESIGN LEAVES, PALM TREE, STARS, HEARTS

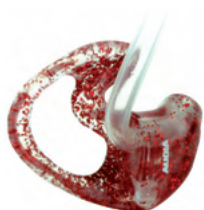


AUDIA FASHION AND JUNIORLINE

Comfortable Earmolds with elegant, extravagant, bold colours and designs for the ear.



Glitter blue



Glitter red

HARD MATERIAL

SHAPE	COMFORT EARMOLD
MATERIAL	ACRYLIC
COLOURS	TRANSPARENT, TRANSPARENT PINK
DESIGN	GLITTER (SILVER, GOLD, RED, BLUE, MOTHER OF PEARL, MULTICOLOURED)

GLITTER DESIGN

SOFT MATERIAL

SHAPE	COMFORT EARMOLD
MATERIAL	AUDIASOFT AS 25/40/70
COLOURS	TRANSPARENT, TRANSPARENT PINK
DESIGN	GLITTER (SILVER, GOLD, RED, BLUE, MOTHER OF PEARL, MULTICOLOURED)



Glitter multicoloured



Glitter gold

TATTOO DESIGN

SHAPE COMFORT, RIC, MINI-TUBE EARMOLDS

MATERIAL FOTOTEC®, ACRYLIC

COLOURS WIDE CHOICE OF COLOURS

DESIGN TATTOO DESIGN + FIGURE

TATTOO DESIGN 1 / FLOWER BLACK



TATTOO DESIGN 3 / FLOWER WHITE



TATTOO DESIGN 4 / BUTTERFLY WHITE



TATTOO DESIGN 6 / FLOWER BLUE



TATTOO DESIGN 7 / HEART WHITE



Note

Customers' special requests can be incorporated by agreement with our laboratory. Images may differ from the original.

TITANIUM - THE NEW ELEGANCE IN THE EAR

Ultra-thin, virtually indestructible and elegant - for a wearing experience that makes all the difference.



ADVANTAGES AT A GLANCE

- MAXIMUM STABILITY
- WALL THICKNESSES UP TO 0.2 MM
- SKIN-FRIENDLY
- EASY TO CLEAN
- BIOCOMPATIBLE AND LOW ALLERGENICITY
- FOR NARROW AND COMPLEX EAR CANALS
- LONG SERVICE LIFE
- HIGH WEARING COMFORT
- AESTHETIC MODELLING POSSIBLE
- NO DISCOLOURATION OF THE MATERIAL
- LASER CUSTOMISATION WITH MAXIMUM PRECISION
- MANUFACTURED IN THURINGIA, GERMANY



TIN TITAN

Titanium is a genuine high-tech material and combines a number of advantages: Its enormous stability enables significantly thinner wall thicknesses. Titanium is also biocompatible, skin-friendly, easy to care for and durable. Titanium earmolds from AUDIA enable optimum treatment at a high aesthetic level, even for narrow and complex ear canals.



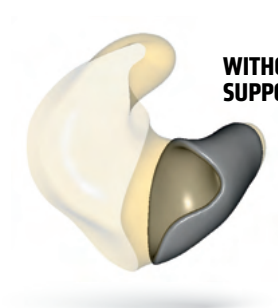


TITANI

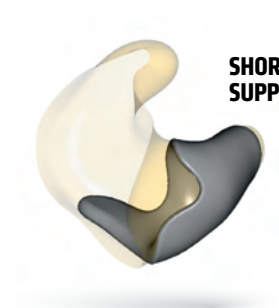
ORDERING OPTIONS

Custom-made variations
and combinations.

SUPPORTS



**WITHOUT
SUPPORT**



**SHORT HOOK
SUPPORT**



**LONG HOOK
SUPPORT**



**CLAW
SUPPORT**



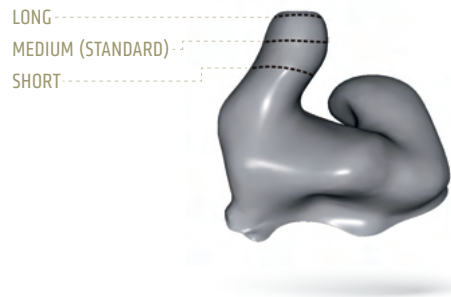
**SHELL
SUPPORT**



**RING
SUPPORT**

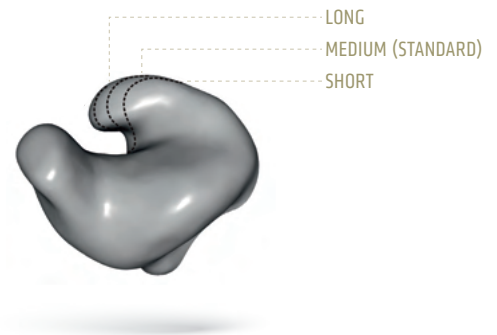
CANAL LENGTH

Please select and mark according to the customer's requirements.



CYMBA LENGTH

Please select the shape that best represents the cymba according to the customer's requirements.



SURFACES

MATERIAL

POLISHED *(Standard)*

The earmold comes with a polished finish as standard.

FOTOTEC®, ACRYLIC, TITAN

MATT

The earmold has a matt finish..
Titanium is fine matt-finished as standard.

FOTOTEC®, THERMOTEC®,
ACRYLIC, TITAN

POLISHED/MATT FINISH

The visible side of the earmold has a matt finish,
while the side which has contact with the skin has a
polished finish.

FOTOTEC®, ACRYLIC

GLAZED

The earmold is coated with LPH lacquer.

FOTOTEC®, ACRYLIC

SOFT LACQUER

With hard material, the entire earpiece is coated with
LPW; with soft material, it is coated with silicone
lacquer.

FOTOTEC®, ACRYLIC,
AUDIASOFT

NANOSCREEN™ LACQUER

The innovative coating for hard earmolds creates
an easy-to-clean, nanostructured surface which
is extremely homogeneous and hard (transparent
available).

FOTOTEC®, ACRYLIC,

NANOPRO

The antibacterial coating uses the bactericidal
and fungicidal action of “active silver” (AgPure)
to prevent inflammation and promote the natural
microclimatic balance in the ear.

AUDIASOFT

ORDERING OPTIONS

Custom-made variations
and combinations.

VENT



ROUND VENT

Classic cylindrical shape of vent with diameter of 0.8 mm to 5.0 mm (1.8 mm and 2.5 mm suitable for Variovent).

MATERIAL FOTOTEC®, ACRYLIC, AUDIASOFT, THERMOTEC®,
TITAN

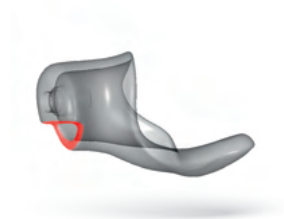


HORN VENT

Round vent with diameter enlarging in relation to canal. The increased residual volume prevents feedback, reduces occlusion effects and provides natural sound characteristics.

Sizes: 1 mm > 3 mm, 1.5 mm > 4 mm,
1.8 mm > 4 mm (suitable for Variovent),
2.5 mm > 4 mm (suitable for Variovent)

MATERIAL FOTOTEC®, AUDIASOFT, TITAN



FULLY OPEN

Largest possible vent opening in relation to customer's anatomy (no gradation according to need).

MATERIAL FOTOTEC®, ACRYLIC, AUDIASOFT, THERMOTEC®,
TITAN

PROFIVENT®

Has the largest possible diameter with an outlet opening reduced to 0.8 mm.

The benefit: high feedback resistance, easiest ream-chining of the outlet opening to enlarge it, optimal ventilation and sound properties.

MATERIAL FOTOTEC®, AUDIASOFT, TITAN





POWER VENT

The Power vent is a very long vent with a diameter of 1.0–2.0 mm. The outer opening of the vent is in the tip of the cymba.

The benefit: high feedback resistance for power supply and lower occlusion effect due to pressure equalisation.

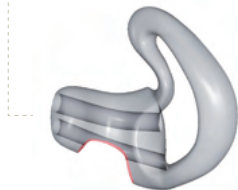
MATERIAL FOTOTEC®, TITAN

OPTION: GRADATION/SKELETISATION

Vent options, such as gradation or skeletisation, are feasible for selected vents.

Gradation: step at end of canal

Skeletisation: Generous recess in the lower contact surface at the first bend in the ear canal, to reduce occlusion and autophonic effects.



CLIMA-VENT

The Clima venting has an especially open design thanks to its four symmetrical holes, ensuring maximum ventilation (possible only in film design).

MATERIAL THERMOTEC®

IROS

Generous cylindrical vent (2.0 mm to 4.0 mm diameter) including sharp gradation to first bend in the ear canal.

MATERIAL FOTOTEC®, ACRYLIC, AUDIASOFT, THERMOTEC®, TITAN



ORDERING OPTIONS

Custom-made variations
and combinations.

HEARING TUBE/ANGLE

STANDARD- HEARING TUBE*

The most frequently used size, Ø 2.0 x 3.0 mm (also available as DryTube which improves moisture outflow).

COLOURS

TRANSPARENT, BEIGE,
RED-TRANSPARENT,
BLUE-TRANSPARENT, BLACK

PP- HEARING TUBE

With greater wall thickness, for adapting to strong hearing systems, Ø 2.0 x 4.0 mm; 2.0 x 3.4 mm

COLOURS

TRANSPARENT

CHILDREN'S HEARING TUBE

Significantly smaller than the standard hearing tube, Ø 1.5 x 2.5 mm

LOW-FREQUENCY HEARING TUBE

For very narrow ear canals

* Standard sound tubes are always fitted at no surcharge.

LIBBYHORN (HORN TUBE)

The widening of the Libbyhorn causes an increase in high frequencies above 2 kHz.

Ø 3.0 mm; 4.0 mm
(also available as DryTube)

COLOURS TRANSPARENT



ANGLE

The sound tube angle is firmly set in the earmold and the sound tube inserted.

Ø 2.5 mm; 3.0 mm

COLOURS TRANSPARENT



Note

If for anatomical reasons the required hearing tube cannot be fitted, the earmold will be prepared for an appropriate angle fitting as standard. Hearing tube and angle are enclosed separately.

ANCHOR TUBE/EXPANDING COUPLING

The anchor tube or the expanding coupling are used to attach tubes in soft or thermo-elastic materials without the use of adhesives. Benefit: The tube is easily replaceable.



Anchor tube: The anchor tube is clipped into a matching socket on the concha side.

Expanding coupling: Tubes fitted using an expanded coupling are pressed into the end of the peg in the sound canal.



LASER MARKING/ PERSONALISED LABEL

On request, earmold labels can be customised using a laser, either in black or white. You can customise up to three lines, with the option of using your company logo*, customer name, date, order number etc.**

* To arrange a customised engraving, please contact our Customer Service Team, who will look into this for you. Set-up costs will be incurred.

** If there is insufficient space on the earmold (due to narrow/small auditory canal anatomy or very small design), AUDIA reserves the right to reduce the desired engraving or not to implement it at all without consulting the customer. For small earpieces, engraving is reduced according to the following prioritisation: 1. order number, 2. name, 3. logo, 4. without engraving. This serves to reduce queries and the processing time.



AUDIA QUICK CONNECT ADAPTER

The system consists of a socket glued into the earmold and a special connector with a tube. The connector can be rotated 360°. The benefits: high flexibility, tube easily replaceable, visually very appealing.

Ø 2.0 x 3.0 mm; 2.0 x 4.0 mm

MATERIAL FOTOTEC®, AUDIASOFT AS 40/70, THERMOTEC®

SIDE INDICATOR

All earmolds are marked with a red (right) or blue (left) dot on the side as standard. Titanium is labelled with a right/left marking.





HEARING PROTECTION



CUSTOMISED, INDIVIDUAL AND MADE TO MEASURE

Customised hearing protection offers effective and reliable protection in demanding noise situations. With hearing protection earmolds from AUDIA, you can enjoy life to the full without any risk to your hearing.

INFORMATION AND GUIDELINES FOR AUDIOLOGISTS.

SUPPLY PROCESS AND SELECTION CRITERIA

1. DEMAND

- Persons exposed to noise
- Employers, where appropriate
- Occupational health, where appropriate
- Company doctors, where appropriate

2. INFORMATION REQUIRED

- Sound pressure level (*level of exposure to noise*)
- Frequency spectrum (*composition of sound/noise class*)
- Nature of exposure (*constant or repeated brief exposure*)
- Environmental and usage conditions (*air humidity, temperature, air pollution, physical stresses/strains, directional hearing*)
- Medical aspects (*hearing loss, special anatomical features*)
- Signal hearing and/or speech intelligibility required
- Compatibility with other protective equipment

3. SELECTION

- Persons exposed to noise
- Supplier
- Manufacturer
- Employers, where appropriate
- Occupational health, where appropriate
- Company doctors, where appropriate

9.1 CARE

- Supplier
- Occupational health, where appropriate
- Company doctors, where appropriate

9.2 SAFE USE

- Persons exposed to noise

9.3 QUALITY MONITORING

- Manufacturer

8.1 AFTERCARE

- Regularly repeated functional testing
- Regular monitoring of condition

8.2 PRACTICAL APPLICATION

- Consistent use when noise present
- Routine handling
- Appropriate care

8.3 AFTERCARE

- Feedback of results of functional testing
- Correction of deficiencies

7. DISTRIBUTION/ ADAPTATION

- Persons exposed to noise
- Supplier
- Occupational health, where appropriate
- Company doctors, where appropriate

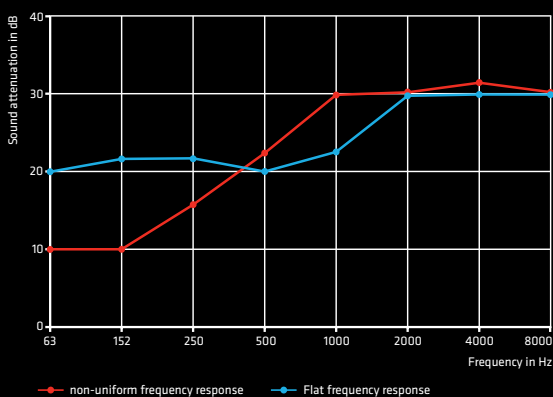
6. ONGOING CONFORMITY

- CE marking
- Access to documents required (*declaration of conformity*)
- Provision of instructions for use (*Notes on risks, usage and cleaning*)
- Manufacturer's mark on the PPE
- Brand name of the PPE
- Performance of a functional test

5. ORDERING/ PRODUCTION

- Supplier
- Manufacturer

Attenuation characteristics (sample attenuation graphs)



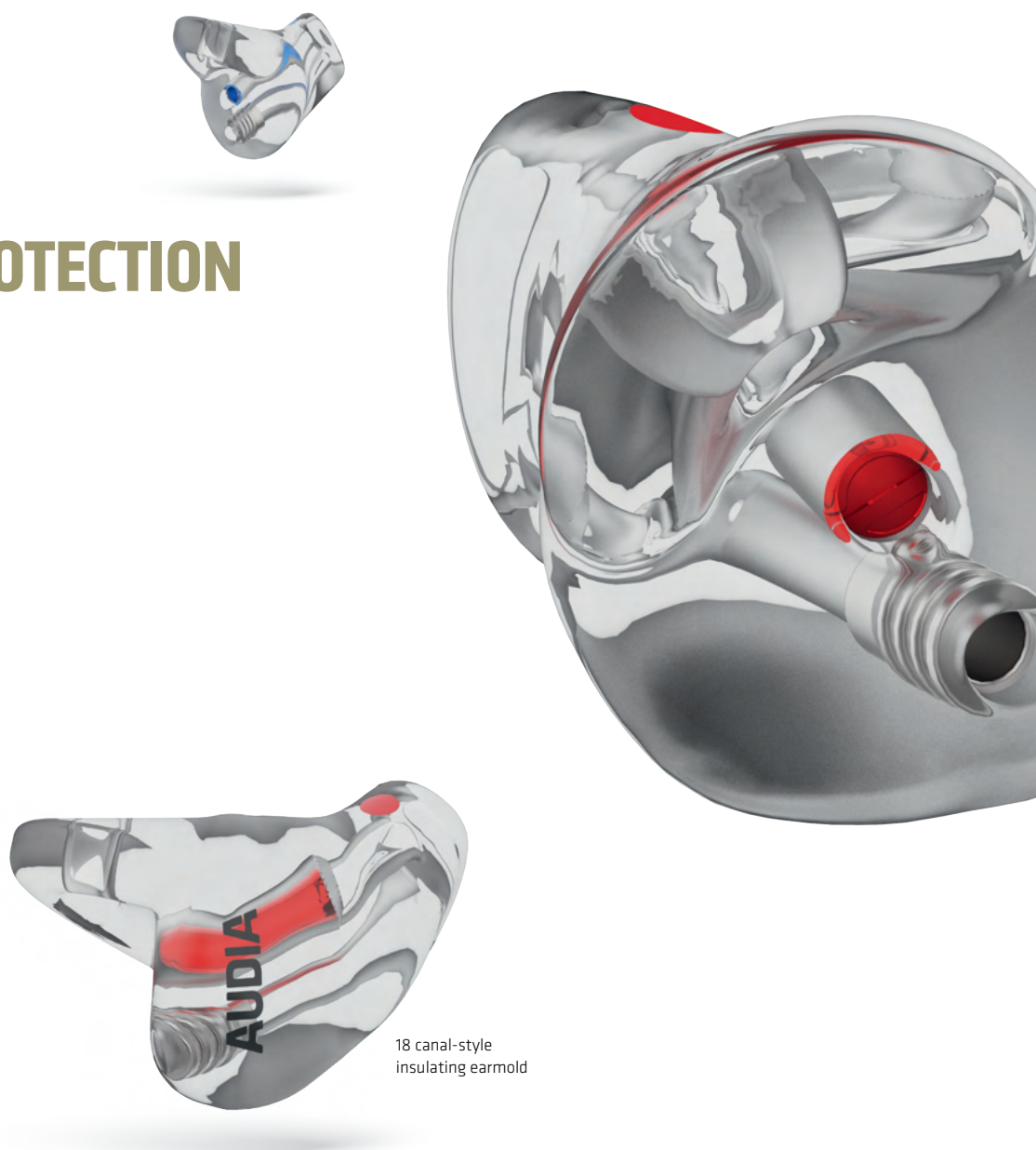
4. SELECTION CRITERIA

- Attenuation value
- Nature of attenuation (*mid/high frequency or broad bandwidth/low frequency*)
- Type of hearing protector (*mass-produced capsule/earplug or individual earmold*)
- PPE approval (*CE type approval*)
- Resilience/cleanability (*material, geometry*)
- Markings for signal perception/speech intelligibility
- Haptic/mechanical properties (*e.g. handle, cord*)

EPRO-X.S

HEARING PROTECTION

Customised protection
for the ear.



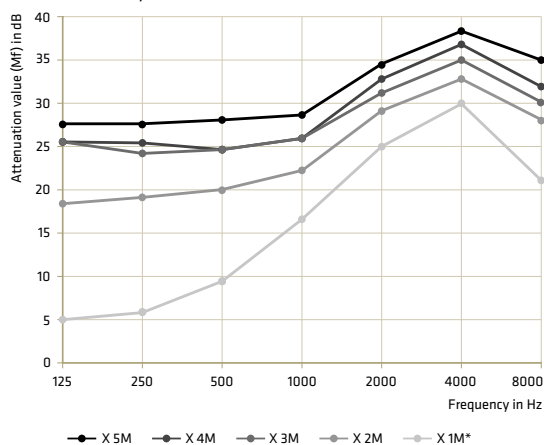
18 canal-style
insulating earmold

The innovative ePRO-X.S earplugs are individually manufactured with a comfortable, soft material. They stand out when it comes to their optimal wearing comfort and superior insulating properties. Their core component is the durable, replaceable filter element made of stainless steel. The earmolds are also fitted with an ancillary sound channel, allowing for the connection of additional products. If the channel is not used, it is sealed with a sealing plug.

Five different filter elements, made of high-precision, durable stainless steel, allow the earplugs to be adjusted to different noise ranges and applications (1 to 5 coded rings for visual differentiation).

DESIGN	18 CANAL-STYLE INSULATING EARMOLD
MATERIAL	AUDIASOFT AS 70
COLOURS	FOR THE RANGE OF COLOURS, SEE P. 68-69
FILTERS	5 DIFFERENT, REPLACEABLE FILTER ELEMENTS
INCLUDES	AUDIA SOFTCASE, CARE GEL, USER MANUAL, SIDE MARKING, ADDITIONAL SOUND CHANNEL WITH SEALING PLUG
OPTIONS	HANDLE, WHITE CORD, COLLAR CLIP, ENGRAVING
APPLICATION	INDUSTRY, MANUAL WORK, HOBBIES, MOTOR SPORTS ETC.

Attenuation characteristics (determined in type examination according to EN 352-2):



The hearing protectors have been tested in accordance with EN352-2 and meet the requirements of PPE Regulation (EU) 2016/425 on personal protective equipment (PPE).

You can find the full declaration of conformity on our website at: www.audia-akustik.de (Media center)



X 5M

		Signals: S, V, W, E						
X 5M	Frequency(Hz)	125	250	500	1000	2000	4000	8000
	Mf (dB)	27,8	27,5	28,0	28,5	34,4	38,2	34,8
	Sf (dB)	3,6	4,2	3,4	3,0	4,0	4,7	5,6
	APV (dB)	24,2	23,3	24,6	25,5	30,4	33,5	29,2
	SNR 30 H 31 M 27 L 25							
	Mf (dB)	31,8	33,0	29,2	27,9			
	Sf (dB)	2,2	2,3	2,4	2,6			



X 4M

Signals: S, W, E							
Frequency(Hz)	125	250	500	1000	2000	4000	8000
Mf (dB)	25,2	25,2	24,6	25,5	32,3	36,7	31,8
Sf (dB)	4,9	3,0	3,2	3,6	2,8	4,7	6,9
APV (dB)	20,3	22,2	21,4	21,9	29,5	32,0	24,9
SNR 26 H 27 M 24 L 23							
Mf (dB)	28,8	30,4	26,2	25,2			
Sf (dB)	2,6	3,2	2,6	2,4			



X 3M

Signals: S, V, W, X, E							
Frequency(Hz)	125	250	500	1000	2000	4000	8000
Mf (dB)	25,4	24,2	24,3	25,5	31,0	35,0	29,9
Sf (dB)	3,9	4,2	4,9	4,8	3,0	3,8	4,3
APV (dB)	21,5	20,0	19,4	20,7	28,0	31,2	25,6
SNR 26 H 27 M 22 L 21							
Mf (dB)	28,3	29,5	25,9	24,7			
Sf (dB)	2,8	2,3	3,8	3,6			



X 2M

Signal: W							
Frequency(Hz)	125	250	500	1000	2000	4000	8000
Mf (dB)	18,1	19,2	20,3	22,5	28,9	33,0	28,1
Sf (dB)	4,5	2,9	3,5	2,8	4,2	3,5	4,9
APV (dB)	13,6	16,3	16,8	19,7	24,7	29,5	23,2
SNR 23 H 25 M 20 L 18							
Mf (dB)	25,3	27,5	22,5	20,2			
Sf (dB)	2,1	2,7	2,2	2,4			



X 1M*

X 1M*	Signals: -							
	Frequency(Hz)	125	250	500	1000	2000	4000	8000
	Mf (dB)	5,3	6,1	9,1	16,6	25,3	30,3	20,8
	Sf (dB)	5,1	6,7	4,0	2,7	3,8	2,3	2,9
	APV (dB)	0,2	-0,6	5,1	13,9	21,5	28,0	17,9
	SNR 12 H 20 M 9 L 3							
	Mf (dB)	16,1	21,8	13,1	8,3			
	Sf (dB)	3,8	2,2	3,9	5,2			

***Attention:** With the X 1M filter, the ePRO-X.S earmolds do not constitute personal protective equipment, as the filter does not meet the minimum attenuation requirements of EN352-2. They should therefore be used for comfort purposes only, e.g. in the event of intrusive background noise.

EPRO-X.A

HEARING PROTECTION

Customised protection
for the ear.

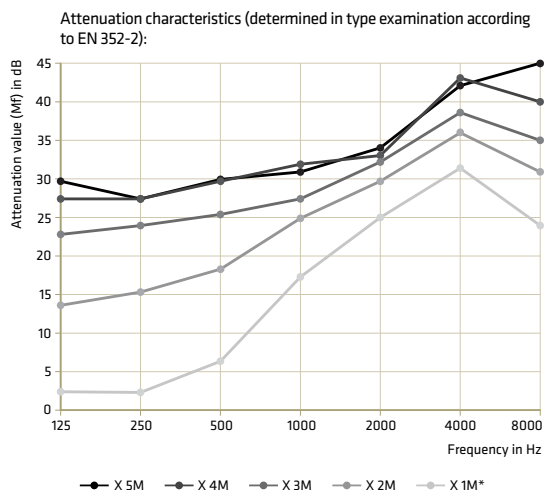


18 canal-style
insulating earmold

The innovative ePRO-X.A earmolds are individually manufactured with a hard, dirt-repellent material. They stand out for their optimal wearing comfort and superior insulating properties. A central, durable filter element made of stainless steel and a special holding system for straightforward filter changing complement the overall package.

Five different filter elements, made of high-precision, durable stainless steel, allow the earplugs to be adjusted to different noise ranges and applications (1 to 5 coded rings for visual differentiation).

DESIGN	18 CANAL-STYLE INSULATING EARMOLD, 19 CONCHA INSULATING EARMOLD
MATERIAL	FOTOTEC®
COLOURS	FOR THE RANGE OF COLOURS, SEE P. 68-69
FILTERS	5 DIFFERENT, REPLACEABLE FILTER ELEMENTS
INCLUDES	AUDIA SOFTCASE, CARE GEL, USER MANUAL, SIDE MARKING
OPTIONS	HANDLE, WHITE CORD, COLLAR CLIP, ENGRAVING
APPLICATION	INDUSTRY, MANUAL WORK, HOBBIES, MOTOR SPORTS ETC.



The hearing protectors have been tested in accordance with EN352-2 and meet the requirements of PPE Regulation (EU) 2016/425 on personal protective equipment (PPE).

You can find the full declaration of conformity on our website at: www.audia-akustik.de (Media center)



X 5M

Signals: W, S, E	
Frequency(Hz)	125 250 500 1000 2000 4000 8000
Mf (dB)	29,4 27,3 30,1 31,1 33,9 41,8 45,0
Sf (dB)	4,3 3,8 4,2 3,2 3,3 2,2 2,9
APV (dB)	25,1 23,5 25,9 27,9 30,6 40,6 42,1
SNR 32 H 33 M 29 L 26	
Mf (dB)	34,1 35,3 31,3 29,3
Sf (dB)	2,4 2,4 2,7 3,1



X 4M

Signals: W, S, E	
Frequency(Hz)	125 250 500 1000 2000 4000 8000
Mf (dB)	27,5 27,2 29,7 31,9 33,3 42,4 39,8
Sf (dB)	4,4 4,2 4,5 5,6 3,6 3,6 4,3
APV (dB)	23,1 23,0 25,2 26,3 29,7 38,8 35,5
SNR 31 H 32 M 28 L 25	
Mf (dB)	33,3 34,1 30,9 28,8
Sf (dB)	2,4 2,0 3,2 3,4



X 3M

Signals: W, S, E	
Frequency(Hz)	125 250 500 1000 2000 4000 8000
Mf (dB)	23,0 23,8 25,4 27,6 32,6 38,8 34,9
Sf (dB)	4,2 4,4 3,3 2,6 3,7 3,8 4,2
APV (dB)	18,8 19,4 22,1 25,0 28,9 35,0 30,7
SNR 28 H 31 M 25 L 22	
Mf (dB)	30,3 32,1 27,6 25,0
Sf (dB)	2,0 1,6 2,3 2,9



X 2M

Signals: -	
Frequency(Hz)	125 250 500 1000 2000 4000 8000
Mf (dB)	13,6 15,4 18,3 24,7 29,5 36,1 31,1
Sf (dB)	4,5 3,1 2,2 1,9 3,1 3,9 6,2
APV (dB)	9,1 12,3 16,1 22,8 26,4 32,2 24,9
SNR 23 H 27 M 20 L 15	
Mf (dB)	24,9 29,1 22,1 17,3
Sf (dB)	1,8 1,9 1,9 2,5



X 1M*

Signals: -	
Frequency(Hz)	125 250 500 1000 2000 4000 8000
Mf (dB)	2,5 2,3 6,2 17,0 24,7 31,6 24,2
Sf (dB)	2,8 3,3 4,5 4,0 3,2 3,4 6,9
APV (dB)	-0,3 -1 1,7 13,0 21,5 28,2 17,3
SNR 10 H 18 M 7 L 2	
Mf (dB)	13,8 21,0 10,8 5,2
Sf (dB)	3,5 3,4 3,6 3,1

***Attention:** With the X 1M filter, the ePRO-X.S earmolds do not constitute personal protective equipment, as the filter does not meet the minimum attenuation requirements of EN352-2. They should therefore be used for comfort purposes only, e.g. in the event of intrusive background noise.

EPRO-STOP.S

HEARING PROTECTION

Customised protection
for the ear.

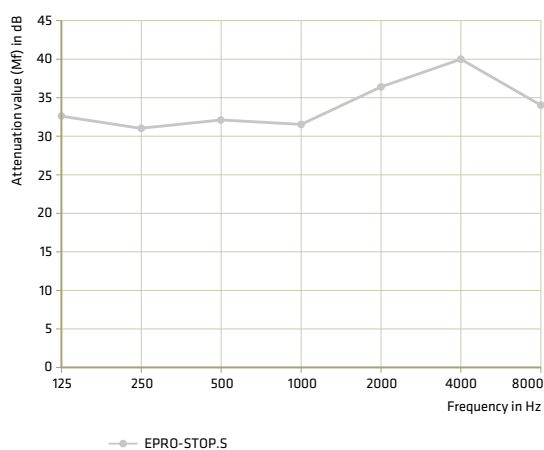


The customised ePRO-STOP.S earmold is available in a soft material. Its outstanding feature is its comfort in use and its strong, broad-band attenuation (with no filter element).

DESIGN	18 CANAL-STYLE INSULATING EARMOLD
MATERIAL	AUDIASOFT AS 70
COLOURS	FOR THE RANGE OF COLOURS, SEE P. 68–69
INCLUDES	AUDIA HARDCASE, USER MANUAL, SIDE MARKING
OPTIONS	AUDIA SOFTCASE, HANDLE, WHITE CORD, COLLAR CLIP, DETECTOR BALL, ENGRAVING
APPLICATION	INDUSTRY, MANUAL WORK, HOBBIES, MOTOR SPORTS ETC.

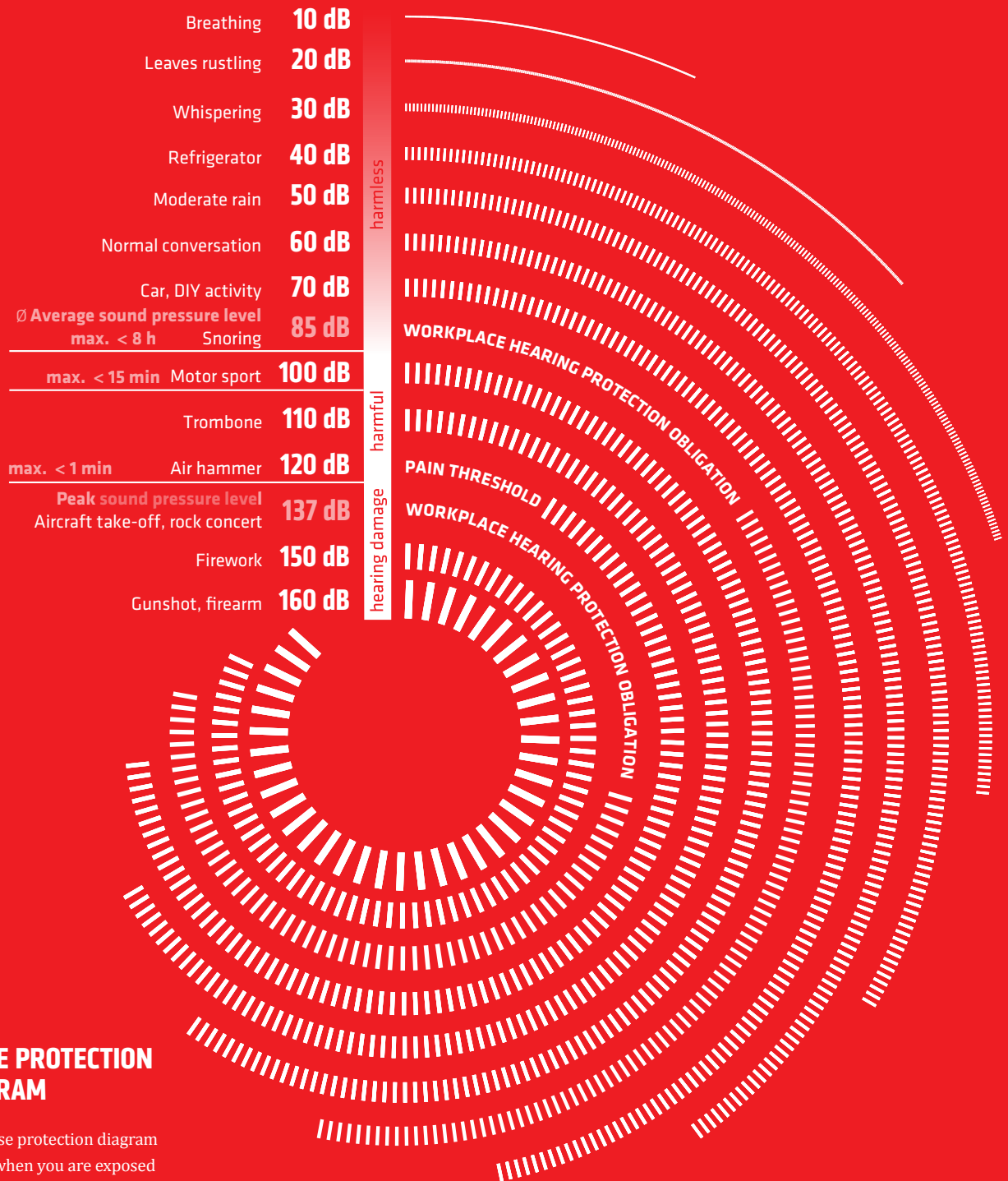
EPRO-STOP.S	Signals: W, S, V, E							
	Frequency(Hz)	125	250	500	1000	2000	4000	8000
	Mf (dB)	32,7	31,4	32,3	32,0	36,4	39,7	33,7
	Sf (dB)	4,7	3,8	2,9	2,9	2,6	3,8	4,1
	APV (dB)	28,0	27,6	29,4	29,1	33,8	35,9	29,6
	SNR 33 H 34 M 31 L 29							
	Mf (dB)	34,6	34,9	32,7	32,0			
	Sf (dB)	1,6	1,4	2,1	2,7			

Attenuation characteristics (determined in type examination according to EN 352-2):



The hearing protectors have been tested in accordance with EN352-2 and meet the requirements of PPE Regulation (EU) 2016/425 on personal protective equipment (PPE).

You can find the full declaration of conformity on our website at: www.audia-akustik.de (Media center)



NOISE PROTECTION DIAGRAM

The noise protection diagram shows when you are exposed to damaging noise. This can be harmful to health in the long term.

TERMS / KEY

Mf:.....Average sound attenuation in dB
 Sf:.....Standard deviation of the sound attenuation in dB
 APV:.....Assumed Protection Value in dB (APV = Mf - Sf)
 SNR:.....Single Number Rating – average sound attenuation in dB across the entire frequency range (125–8000 Hz)
 L:.....Average sound attenuation in dB in the low frequency range (125–500 Hz)
 M:.....Average sound attenuation in dB in the medium frequency range (500–2000 Hz)

H:.....Average sound attenuation in dB in the high frequency range (2000–8000 Hz)
 W:.....Ability to hear warning signals and general informational sounds, speech intelligibility
 X:.....Linear insulating hearing protection for people with hearing loss and musicians
 S:.....Ability to hear signals in railway track superstructure
 V:.....Ability to hear signals in road traffic
 E:.....Ability to hear signals for vehicle and locomotive drivers on railways

ELACIN® CH

HEARING PROTECTION

Customised protection
for the ear.

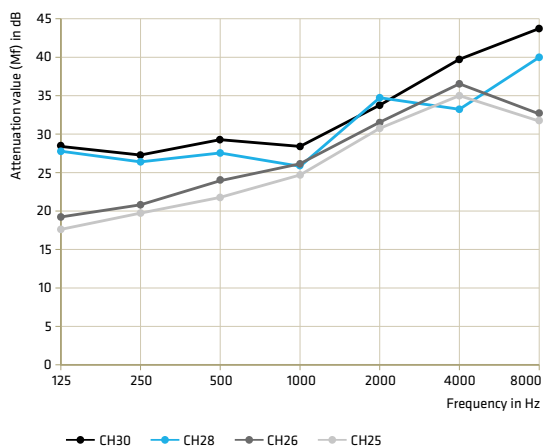


The Elacin® CH earmolds are individually manufactured with a soft material and come with a special noise protection filter. Therefore, they provide an ideal combination of maximum wearing comfort and optimum protection. The special mini grip design with a flexible, ring-shaped handle is especially suited for use under a helmet and was initially developed for the motorcycle squad of the Dutch traffic police.

*Four different high-quality plastic filter elements enable adjustment of the earplugs to different noise ranges and applications (in different colours for visual differentiation). The filters are easy to change and also have a coloured side marking (red/blue). **Attention:** As a different sound channel diameter is required for the CH30 filter, the earpiece must be re-manufactured when changing to this filter or from this to another filter.*

DESIGN	18 CANAL-STYLE INSULATING EARMOLD
MATERIAL	FLEXFIT 60 SHORE (FF 60)
COLOURS	FOR THE RANGE OF COLOURS, SEE P. 68-69
FILTERS	4 DIFFERENT, REPLACEABLE FILTER ELEMENTS
INCLUDES	AUDIA HARDCASE, USER MANUAL, SIDE MARKING
OPTIONS	AUDIA SOFTCASE, HANDLE, CORD, MINI GRIP, COLLAR CLIP, DETECTOR BALL, ENGRAVING
APPLICATION	INDUSTRY, MANUAL WORK, HOBBIES, MOTOR SPORTS ETC.

Attenuation characteristics (determined in type examination according to EN 352-2):



The hearing protectors have been tested in accordance with EN352-2 and meet the requirements of PPE Regulation (EU) 2016/425 on personal protective equipment (PPE).

You can find the full declaration of conformity on our website at: www.audia-akustik.de (Media center)



CH30

CH30	Signals: W, S, E							
	Frequency(Hz)	125	250	500	1000	2000	4000	8000
	Mf (dB)	29,1	27,5	29,6	28,3	34,0	40,2	44,0
	Sf (dB)	3,8	3,9	3,7	3,5	2,9	3,4	5,6
	APV (dB)	25,3	23,6	25,9	24,8	31,1	36,8	38,4
		SNR	H	M	L			
	Mean	32,6	33,8	29,5	28,6			
	Std	2,3	1,9	2,8	2,9			
Value	30	32	27	26				



CH28

CH28	Signals: W, X, S, V, E							
	Frequency(Hz)	125	250	500	1000	2000	4000	8000
	Mf (dB)	28,5	26,6	27,7	26,0	34,7	33,4	39,7
	Sf (dB)	4,7	3,6	3,3	3,6	2,6	3,8	5,3
	APV (dB)	23,8	23,0	24,4	22,4	32,1	29,6	34,4
		SNR	H	M	L			
	Mean	30,5	31,8	27,5	27			
	Std	2,3	2	2,9	2,7			
	Value	28	30	25	24			



CH26

Signals: W								
CH36	Frequency(Hz)	125	250	500	1000	2000	4000	8000
	Mf (dB)	19,4	20,9	23,8	26,2	31,3	36,5	32,8
	Sf (dB)	4,3	3,3	3,2	3,3	2,8	2,5	4,7
	APV (dB)	15,1	17,6	20,6	22,9	28,5	34,0	28,1
		SNR	H	M	L			
	Mean	28,6	30,9	26	22,7			
	Std	2,6	2,5	2,8	3,1			
	Value	26	28	23	20			



CH25

CH25	Signals: W							
	Frequency(Hz)	125	250	500	1000	2000	4000	8000
	Mf (dB)	17,9	19,7	21,9	24,6	30,7	35,0	32,1
	Sf (dB)	3,5	2,3	2,9	3,6	3,3	2,1	3,8
	APV (dB)	14,4	17,4	19,0	21,0	27,4	32,9	28,3
		SNR	H	M	L			
	Mean	27,2	29,8	24,3	21,2			
	Std	2	2,3	2,4	1,7			
	Value	25	28	22	20			

ELACIN® RC HEARING PROTECTION

Customised protection
for the ear.

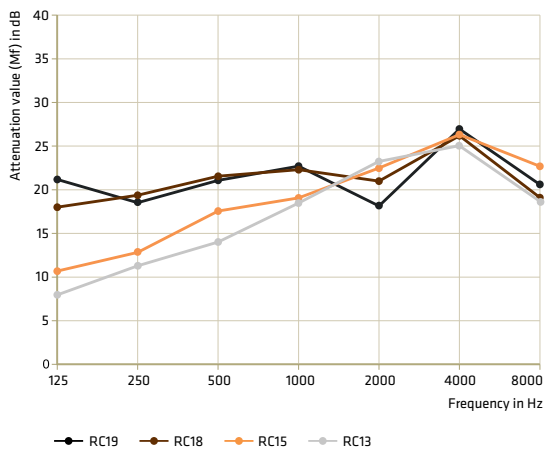


The compact Elacin® RC earmolds are produced in a soft material and have a patented attenuation filter concept, which provides improved transparency at higher frequencies. Thanks to these significantly improved attenuation characteristics, they provide excellent speech intelligibility and perception of working noise and warning signals.

Five different high-quality plastic filter elements enable adjustment of the earplugs to different noise ranges and applications (in different colours for visual differentiation). The filters are easy to change and also have a coloured side marking (red/blue).

DESIGN	18 CANAL-STYLE INSULATING EARMOLD
MATERIAL	FLEXFIT 60 SHORE (FF 60)
COLOURS	FOR THE RANGE OF COLOURS, SEE P. 68–69
FILTERS	5 DIFFERENT, REPLACEABLE FILTER ELEMENTS
INCLUDES	AUDIA HARDCASE, USER MANUAL, SIDE MARKING
OPTIONS	AUDIA SOFTCASE, HANDLE, CORD, MINI GRIP, COLLAR CLIP, DETECTOR BALL, ENGRAVING
APPLICATION	INDUSTRY, MANUAL WORK, HOBBIES, MOTOR SPORTS, MUSIC, CONCERTS ETC.

Attenuation characteristics (determined in type examination according to EN 352-2):



The hearing protectors have been tested in accordance with EN352-2 and meet the requirements of PPE Regulation (EU) 2016/425 on personal protective equipment (PPE).

You can find the full declaration of conformity on our website at: www.audia-akustik.de (Media center)



RC19



RC18



RC15



RC13

Signals: W, X

Frequency(Hz)	125	250	500	1000	2000	4000	8000
Mf (dB)	21,3	19,2	20,7	22,6	18,5	26,8	20,4
Sf (dB)	2,0	2,4	2,2	2,4	3,0	1,8	3,3
APV (dB)	19,3	16,8	18,5	20,2	15,5	25,0	17,1
SNR H M L							
Mf	21,5	20	20,7	20,2			
Sf	1,9	2,5	1,7	1,5			
APV	20	18	19	19			

Signals: W, X, S, V, E

Frequency(Hz)	125	250	500	1000	2000	4000	8000
Mf (dB)	18,5	19,8	21,3	22	21	26	19,5
Sf (dB)	1,8	1,4	2,0	2,3	2,5	2,9	3,3
APV (dB)	16,7	18,4	19,3	19,7	18,5	23,1	16,2
SNR H M L							
Mf	22,1	21	21,5	20,6			
Sf	1,4	1,5	1,6	1,3			
APV	21	20	20	19			

Signals: W

Frequency(Hz)	125	250	500	1000	2000	4000	8000
Mf (dB)	10,8	13,1	17,6	19,6	22,7	25,6	22,7
Sf (dB)	3,3	2,6	2,2	2,3	2,0	2,6	3,3
APV (dB)	7,5	10,5	15,4	17,3	20,7	23,0	19,4
SNR H M L							
Mf	21,2	22,7	19,1	15,3			
Sf	1,1	1,4	1,4	1,9			
APV	20	21	18	13			

Signals: W

Frequency(Hz)	125	250	500	1000	2000	4000	8000
Mf (dB)	8,4	11,1	14,5	18,3	23,6	25	19,1
Sf (dB)	2,6	1,7	1,8	2,4	1,8	1,9	4,2
APV (dB)	5,8	9,4	12,7	15,9	21,8	23,1	14,9
SNR H M L							
Mf	19,4	21,6	17,3	13,1			
Sf	1,3	1,8	1,4	1,4			
APV	18	20	16	12			

ELACIN® ER

HEARING PROTECTION

Customised protection
for the ear.



18 canal-style
insulating earmold

The Elacin® ER earplugs offer high-end hearing protection for discerning users. They are individually manufactured in a comfortable, soft material. The special membrane filter creates uniform attenuation over the entire frequency range, which preserves natural tones and prevents distortion.

Three different high-quality plastic membrane filters allow the earplugs to be adjusted to different noise ranges and purposes (with the filters marked 9/15/25 for differentiation purposes).

DESIGN	18 CANAL-STYLE INSULATING EARMOLD
MATERIAL	FLEXFIT 60 SHORE (FF 60)
COLOURS	FOR THE RANGE OF COLOURS, SEE P. 68–69
FILTERS	THREE DIFFERENT REPLACEABLE FILTER ELEMENTS
INCLUDES	AUDIA SOFTCASE, USER MANUAL, SIDE MARKING
OPTIONS	CORD, ENGRAVING
APPLICATION	MUSIC, CONCERTS, HOBBIES ETC.

ER25	Signals: W							
	Frequency(Hz)	125	250	500	1000	2000	4000	8000
	Mf (dB)	22,6	24,0	26,4	24,4	24,4	27,5	25,4
	Sf (dB)	4,7	4,5	3,9	3,7	3,3	2,3	4,5
	APV (dB)	17,9	19,5	22,5	20,7	21,1	25,2	20,9
	SNR	H	M	L				
	Mf	24,9	24,6	22,8	22			
	Sf	2,1	2,6	2,3	2,2			
	APV	23	22	20	20			



ER25

ER15	Signals: W, S, V							
	Frequency(Hz)	125	250	500	1000	2000	4000	8000
	Mf (dB)	17,5	17,6	18,0	16,3	17,3	15,8	20,8
	Sf (dB)	3,8	3,0	2,8	2,6	2,6	2,8	3,9
	APV (dB)	13,7	14,6	15,2	13,7	14,7	13,0	16,9
	SNR	H	M	L				
	Mf	16,4	14,9	15,6	16,2			
	Sf	1,2	1,1	1,3	1,4			
	APV	15	14	14	15			



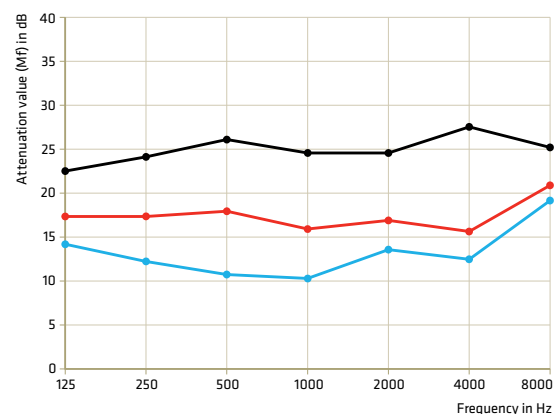
ER15

ER09	Signals: W, S, V, X							
	Frequency(Hz)	125	250	500	1000	2000	4000	8000
	Mf (dB)	14,3	12,2	10,8	10,3	13,5	12,6	19,2
	Sf (dB)	3,9	2,8	5,0	3,5	3,2	3,4	3,7
	APV (dB)	10,4	9,4	5,8	6,8	10,3	9,2	15,5
	SNR	H	M	L				
	Mf	15,5	14,7	13,5	14			
	Sf	0,9	1,2	1,3	1,3			
	APV	15	14	12	13			



ER09

Attenuation characteristics (determined in type examination according to EN 352-2):



The hearing protectors have been tested in accordance with EN352-2 and meet the requirements of PPE Regulation (EU) 2016/425 on personal protective equipment (PPE).

You can find the full declaration of conformity on our website at: www.audia-akustik.de (Media center)



EN 352

DM

HEARING PROTECTION

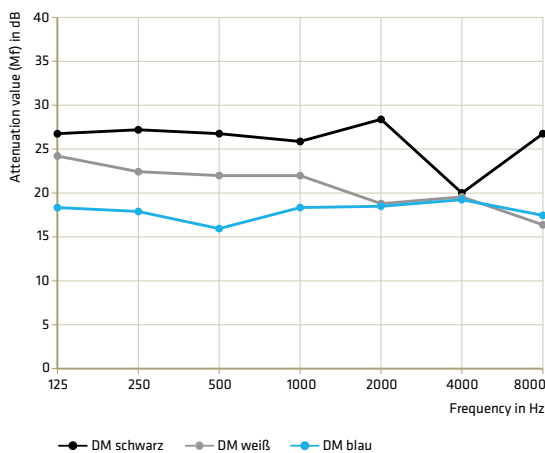
Customised protection
for the ear.

DESIGN	18 CANAL-STYLE INSULATING EARMOLD, 19 CONCHA INSULATING EARMOLD
MATERIAL	AUDIASOFT 40 SHORE (AS 40)
COLOURS	FOR THE RANGE OF COLOURS, SEE P. 68-69
FILTERS	THREE DIFFERENT REPLACEABLE FILTER ELEMENTS
INCLUDES	AUDIA HARDCASE, USER MANUAL, SIDE MARKING
OPTIONS	AUDIA SOFTCASE, HANDLE, CORD, COLLAR CLIP, DETECTOR BALL, ENGRAVING
APPLICATION	MUSIC, CONCERTS, HOBBIES ETC.

The DM earplugs are specially developed for musicians and music lovers. They are individually manufactured in a comfortable, soft material. The special small membrane filter creates a linear attenuation across the entire frequency range, which preserves natural sound tone and prevents distortion.

Three different high-quality, plastic membrane filters allow the earplugs to be adjusted to different noise ranges and purposes (in different colours in the interests of visual differentiation).

Attenuation characteristics (determined in type examination according to EN 352-2):



DM schwarz



DM weiß



DM blau



The hearing protectors have been tested in accordance with EN352-2 and meet the requirements of PPE Regulation (EU) 2016/425 on personal protective equipment (PPE).



You can find the full declaration of conformity on our website at: www.audia-akustik.de (Media center)

DM black	SNR: 23 L: 24, M: 23, H: 21 Signals: W, S, E, V, X							
	Frequency(Hz)	125	250	500	1000	2000	4000	8000
	Mf (dB)	26,7	27,4	26,9	26,3	28,3	20,2	26,7
	Sf (dB)	3,4	3,6	3,7	3,2	3,8	2,6	2,8
	APV (dB)	23,3	23,8	23,2	23,1	24,5	17,6	23,9
		SNR	H	M	L			
	Mf	24,5	23,1	24,6	24,6			
	Sf	1,5	2	1,5	1,9			

DM white	SNR: 18 L: 19, M: 18, H: 16 Signals: W, S, E, V, X							
	Frequency(Hz)	125	250	500	1000	2000	4000	8000
	Mf (dB)	24,3	22,5	22,0	21,9	18,8	19,9	16,6
	Sf (dB)	3,8	2,3	2,7	2,5	4,1	2,5	2,9
	APV (dB)	20,5	20,2	19,3	19,4	14,7	17,4	13,7
		SNR	H	M	L			
	Mf	19,7	17,9	20	20,9			
	Sf	1,7	2,2	2	1,7			

DM blue	SNR: 16 L: 14, M: 15, H: 15 Signals: W, S, E, V, X							
	Frequency(Hz)	125	250	500	1000	2000	4000	8000
	Mf (dB)	18,4	17,7	15,9	18,1	18,3	19,4	17,5
	Sf (dB)	2,9	2,9	3,3	4,0	4,4	2,5	4,5
	APV (dB)	15,5	14,8	12,6	14,1	13,9	16,9	13,0
		SNR	H	M	L			
	Mf	18,2	17,6	17	16,8			
	Sf	2,1	2,6	2,3	2,4			

SWIM EARMOLDS

Reliably protects against water in the ear.

The customised swim protection earmolds are made of soft, comfortable, buoyant silicone. They reliably protect the ears from water penetration and splashing when bathing, showering or doing moderate water sports. Available in 15 great colours and two degrees of hardness.

DESIGN	41 SWIM PROTECTION EARMOLDS
MATERIAL	AUDIA SWIM® 25 SHORE, 35 SHORE
COLOURS	FOR THE RANGE OF COLOURS, SEE P. 68–69
INCLUDES	AUDIA HARDCASE, HANDLE STRIP, USER MANUAL, SIDE MARKING
OPTIONS	AUDIA SOFTCASE, BATHSAFE, CORD, COLLAR CLIP, ENGRAVING
APPLICATION	BATHING, SHOWERING, MODERATE WATER SPORTS (WARNING: NOT SUITABLE FOR DIVING!)

25 SHORE

41 SWIM
PROTECTION
MOLDS



neon-pink



neon-green



neon-yellow



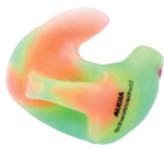
neon-blue



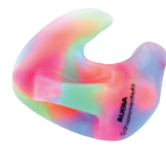
neon-orange



beige



multicoloured



multicoloured



blue



fuchsia-pink



purple



green



yellow



orange



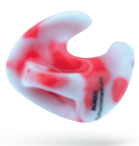
red



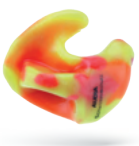
black



white



multicoloured



multicoloured



multicoloured

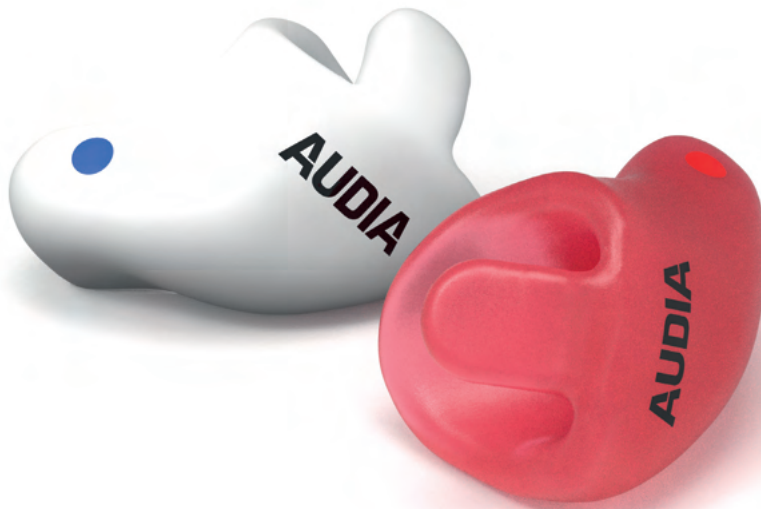
35 SHORE

41 SWIM
PROTECTION
MOLDS

***Attention:** There is no type examination under EN352-2 for swim protection earmolds, so the product is not approved as personal protective equipment (PPE). It is therefore suitable only for comfort purposes for private use.

SLEEP PROTECTION

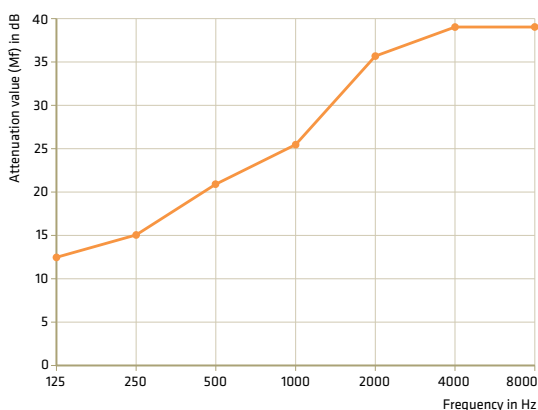
Reduces disturbing noises.



The customised sleeping earplugs provide reliable attenuation against intrusive noises for a pleasant rest and a good night's sleep. They are very small, delicate and made of especially soft material. They are very comfortable to wear in the ear canal, ensuring that they are convenient to wear even when lying on your side.

DESIGN	17 SLEEP EARPLUGS
MATERIAL	AUDIASOFT 25 SHORE (AS 25), 40 SHORE (AS 40)
COLOURS	FOR THE RANGE OF COLOURS, SEE P. 68-69
INCLUDES	AUDIA HARDCASE, HANDLE STRIP, USER MANUAL, SIDE MARKING
OPTIONS	AUDIA SOFTCASE, ENGRAVING
APPLICATION	SLEEPING, RELAXING, TRAVELLING

Attenuation characteristics (statistically determined by audiometric testing):



SLEEP PROTECTION	SNR: - L: -, M: -, H: - Signals: -						
	Frequency(Hz)	125	250	500	1000	2000	4000 8000
	Mf (dB)	12,4	15,2	21,2	25,5	35,7	38,8 38,6
	Sf (dB)	-	-	-	-	-	-
	APV (dB)	-	-	-	-	-	-



For easy removal, hold the flexible grip tab between your thumb and forefinger and pull the sleeping earplugs out of your ear canal.



For maximum sleeping comfort, the flexible grip tab simply flexes inwards when lying on your side and is barely visible.

***Attention:** There is no type examination under EN352-2 for sleep earplugs, so the product is not approved as personal protective equipment (PPE). It is therefore suitable only for comfort purposes for private use. e.g. in the event of intrusive background noise.

ORDERING OPTIONS HEARING PROTECTION

For optimal customisation.



LASER MARKING/ PERSONALISED LABEL

On request, earplugs can be marked with a customised inscription using a laser, either in black or white. You can customise up to three lines, with the option of using your company logo*, customer name, date, order number etc.**

SIDE MARKING

All earplugs are marked with a red (right) or blue (left) dot on the side as standard.



**To arrange a customised engraving, please contact our Customer Service Team, who will look into this for you. Set-up costs will be incurred.*

*** If there is insufficient space on the earmold (due to narrow/small auditory canal anatomy or very small design), AUDIA reserves the right to reduce the desired engraving or not to implement it at all without consulting the customer. For small earpieces, engraving is reduced according to the following prioritisation: 1. order number, 2. name, 3. logo, 4. without engraving. This serves to reduce queries and the processing time.*



INTEGRATED HANDLE

The handle integrated into the earmolds allows for easy insertion and removal. With the ELACIN® RC and ELACIN® CH, the mini grip is an optional alternative to the integrated handle.



HARDCASE

For each individual earmold, we supply our AUDIA hardcase as standard.



SOFTCASE

The AUDIA softcase can also be ordered as an option for customised hearing protection.



COLLAR CLIP

The collar clip is used to attach the elastic cord to the collar.



ELASTIC CORD

The cord is attached to the integral handle on the earmold, to prevent loss of the earplugs during frequent removal and insertion.



DETECTOR BALL

The detector ball is a tiny metal ball bearing inserted into the earmolds and used, for instance, in the food industry. Not necessary for earmolds with an ePRO-X filter.



BATHSAFE

The bathsafe is used for the mobile storage of swim protection earmolds when bathing and swimming, and can be used at any time as required.

ACCESSORIES


HEARING PROTECTION

Fit out and redesign hearing protectors as you like.

EPRO-X.S / X.A

FILTER NAME	ITEM NO.	PACKAGING UNIT
ePRO-X 1M	40606	 <p>In each case 1 PU = 1 item</p>
ePRO-X 2M	40607	
ePRO-X 3M	40609	
ePRO-X 4M	40610	
ePRO-X 5M	40611	

ELACIN® CH

FILTER NAME	ITEM NO.	PACKAGING UNIT
Elacin CH25 left (white-blue)	47463	 <p>In each case 1 PU = 1 item</p>
Elacin CH25 right (white-red)	47464	
Elacin CH26 left (grey-blue)	47466	
Elacin CH26 right (grey-red)	47467	
Elacin CH28 left (blue-blue)	47468	
Elacin CH28 right (blue-red)	47469	
Elacin CH30 left (black-blue)	47470	
Elacin CH30 right (black-red)	47471	

ELACIN® RC

FILTER NAME	ITEM NO.	PACKAGING UNIT
Elacin RC13 left (white-blue)	27883	 <p>In each case 1 PU = 1 item</p>
Elacin RC13 right (white-red)	27884	
Elacin RC15 left (beige-blue)	27885	
Elacin RC15 right (beige-red)	27886	
Elacin RC18 left (brown-blue)	27889	
Elacin RC18 right (brown-red)	27890	
Elacin RC19 left (black-blue)	27891	
Elacin RC19 right (black-red)	27892	

ELACIN® ER

FILTER NAME	ITEM NO.	PACKAGING UNIT
Elacin ER09 (transparent)	22766	 In each case 1 PU = 1 item
Elacin ER15 (transparent)	22754	
Elacin ER25 (transparent)	22767	

DM

FILTER NAME	ITEM NO.	PACKAGING UNIT
DM blue	42016	 In each case 1 PU = 1 item
DM white	42017	
DM black	42018	

SPECIAL OPTIONS AND EQUIPMENT

NAME	ITEM NO.	PACKAGING UNIT
Black cord, approx. 70 cm	33224	 In each case 1 PU = 1 item
Blue cord, approx. 70 cm	47622	
Blue cord for ePRO-X, approx. 80 cm	40743	
Floating cord, 45 cm long		
transparent	10924	
red	48816	
yellow	48817	
purple	48818	
light blue	48819	
green	48820	
Collar clip	35575	 In each case 1 PU = 1 item
AUDIA hardcase	49781	
AUDIA softcase	49782	
Bathsafe		
white	18450	 In each case 1 PU = 1 item
red	18450	
blue	18450	
yellow	18450	

EARPLUG SERIES

Industrially produced hearing protectors for occasional use.

ALPINE SLEEPST[®]



Alpine SleepSoft[®] earplugs are made of soft material. The soft filters ensure that intrusive noises are dampened, while for instance a crying baby, your doorbell or the alarm clock can still be clearly heard. The filter material is so flexible that you can even sleep on your side without problems. > SNR 25

ITEM NO.

42026

PACKAGING UNIT

1 PU = 1 pair

ALPINE PARTYPLUG[™]



The Alpine Partyplug[™] earplugs protect your hearing from excessive music noise. The special Alpine[®] Acoustic Filters ensure that you can still hear the music sufficiently. The earplugs are made of AlpineThermoShape[™] material and fit very comfortably. > SNR 19

ITEM NO.

36494

PACKAGING UNIT

1 PU = 1 pair

ALPINE SWIMSAFE[™]



Alpine SwimSafe[™] are high-grade swim protection earmolds with soft, ribbed edges and a built-in filter for pressure equalisation and a comfortable fit. > SNR 10

ITEM NO.

21846

PACKAGING UNIT

1 PU = 1 pair

ALPINE FLYFIT[®]



Alpine FlyFit[®] is the ideal travel companion whether by car bus, train, boat or plane. Soft, ribbed edges and the built-in UF5 filter ensure you have a relaxing journey. Also tried and tested in aircraft take-off and landing. > SNR 17

ITEM NO.

21845

PACKAGING UNIT

1 VE = 1 Paar

ALPINE PLUGGIES KIDS®



Pluggies Kids® are designed to reduce noise pollution in children's ears. The soft, comfortable earplugs are durable and can be used for a variety of applications. > SNR 25

Suitable for children from 5 to 12 years.

ITEM NO.	PACKAGING UNIT
41484	1 PU = 1 pair

ALPINE WORKSAFE™



WorkSafe™ hearing protection is ideal for all noisy hobbies, from DIY to gardening. Red filter > SNR 23

ITEM NO.	PACKAGING UNIT
30588	1 PU = 1 pair

SANOHRA® SWIM*



Sanohra® Swim earmolds prevent water from entering the ear canal and protect the ears when swimming, bathing or showering. They are made of soft medical plastic, making them easy to use and comfortable to wear. For adults and children.

ITEM NO.	PACKAGING UNIT
36211	1 PU = 1 pair (for adults)
36212	1 PU = 1 pair (for children)

SANOHRA® FLY*



Sanohra® Fly earmolds slow down and regulate pressure changes in front of the eardrum with the new Air Pressure Control (APC). In this way, Sanohra® Fly earmolds help the ears adapt to major changes in pressure conditions without causing discomfort. For adults and children.

ITEM NO.	PACKAGING UNIT
35445	1 PU = 1 pair (for adults)
35446	1 PU = 1 pair (for children)



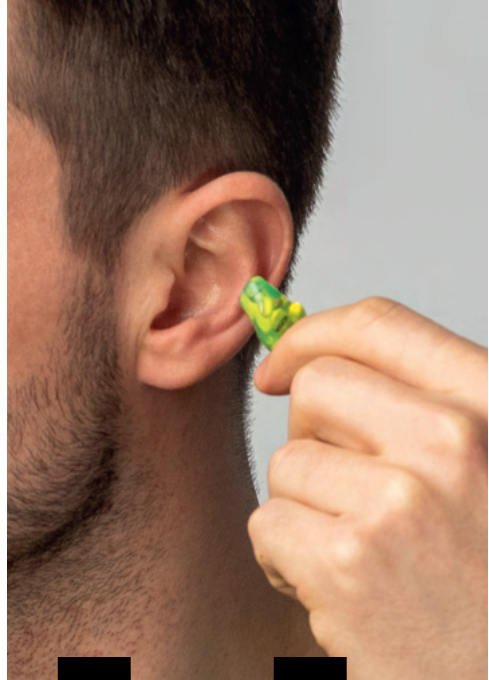
HEADPHONES

IN-EAR HEADPHONES, MADE FOR YOU.

Music, films and everything else sounds simply fantastic. The in-ears from AUDIA deliver rich, high-quality sound. Customisation and selected technical components ensure first-class sound with impressive noise insulation.

FEEL THE SOUND

Perfect sound for maximum
listening pleasure.



PHE

THE IN-EAR HEADPHONES.

With AUDIA in-ear headphones, you not only experience a completely new sound experience, you can also enjoy a perfect fit in the ear.

Listen to music and make phone calls on public transport and in buildings, when shopping, walking, on the way home or directly at work - wherever you want to use in-ear headphones, AUDIA in-ear headphones offer you amazingly natural acoustics and a perfect fit in the ear thanks to customisation.



PH02L



KEY FEATURES

PH02L headphones from AUDIA combine perfect sound with a comfortable fit and exclusive design for maximum listening pleasure.

DESIGN	PERFECT FIT AND EXCELLENT NOISE INSULATION
TECHNOLOGY	BEST SOUND THANKS TO WIDERANGE BALANCED ARMATURE HEADPHONES, INTEGRATED MICROPHONE AND BUTTON
EXTRA	INTERCHANGEABLE CERUMEN PROTECTION HF3/HF4 BLACK
INCLUDED	AUDIA SOFTWARE
COLOURS	TRANSPARENT, BLACK, TRANSPARENT PINK, BLUE, VIOLET, NEON YELLOW, ORANGE, RED AND WHITE

TECHNICAL DATA



Speaker:

WideRange Balanced Armature (Sonion)



Frequency range:

20 Hz – 18.000 Hz



Output sound pressure:

maximum 30 dB



Impedance:

31,5 Ω



Main connection:

3.5 mm mini jack



Noise insulation:

up to 30 dB



Cable:

~1.3 m (Kevlar reinforced)



AUDIA EASY ORDER

Simply order AUDIA
products online

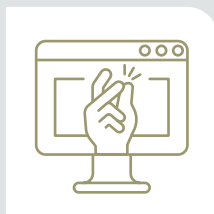


SIMPLE, FAST AND CONVENIENT.

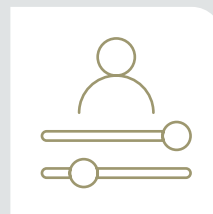
THE MOST IMPORTANT FEATURES



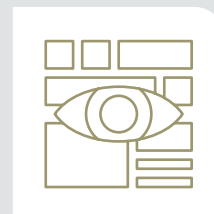
**EASY BROWSER
ACCESS**



**EASY
TO USE**



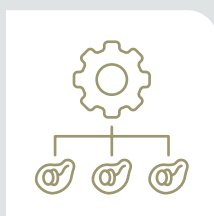
**PERSONAL
SETTINGS**



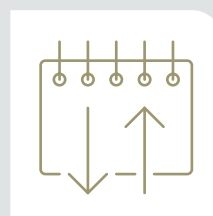
**ALL ORDERS IN
ONE OVERVIEW**



**INFO
HELP DESK**



**INTEGRATION OF
MERCHANDISE
MANAGEMENT**



**ALWAYS
UP TO DATE**



**ADVICE &
SERVICE**

EVERYTHING IN ONE PLACE.

The user-friendly system guides you through your order step by step. In the order overview, you can see all your orders in full view, including status tracking. EASYORDER gets your high-quality earmolds to you more quickly. You can send your ear impressions electronically or by post. It's also easy for you to incorporate EASYORDER into your merchandise management system, for example AMPAREX or ASEGO.

Would you like to become a partner and order via EASYORDER? Then simply send us your contact details using the 'Become a partner' form on our website and you will receive your initial login details.

Alternatively, you can also obtain the login details for EASYORDER from our AUDIA customer service team by calling [03634 693-111](tel:03634693111) or sending an e-mail to kundenservice@audia-akustik.de. Simply use these details to log in at easyorder.audia-akustik.de.

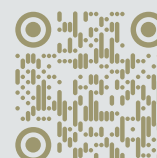
CUSTOMER SERVICE: 03634 693-111



easyorder.audia-akustik.de



Scan the QR code
and sign up directly
to EASYORDER with
your login details.



MATERIALS AND COLOURS

The basis for a wide range
of design options.

FOC FOTOTEC®

Fototec® is a laser-cured plastic for the production of earmolds on the basis of 3D printing. It offers many innovative benefits of digital production.



TAC ACRYLIC COLD-CURE RESIN

Tried and trusted acrylic material (based on PMMA) is available at additional cost and is produced only in hand crafted custom form.



AS AUDIASOFT

Elastic cold-vulcanised silicone in various shore hardnesses, maintains elasticity, very high tear-resistance and sealing effect, non-slip. AS earmolds are lacquer-coated as standard.

AS 25 AUDIASOFT *(especially soft 25 shore)*



AS 40 AUDIASOFT *(medium soft 40 shore)*



AS 70 AUDIASOFT *(viscoplastic 60 shore)*



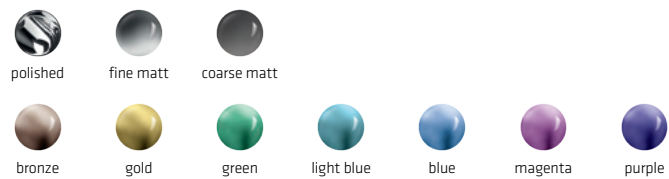
TC THERMOTEC®

High-quality polyurethane-based material, relatively hard at room temperature, becomes viscoplastic at body temperature, particularly kind to tissue, good moisture transfer. Available in 70 shore hardness. We recommend warming the earmold when adjusting the earpiece.



TIN TITAN

Titanium is a real high-tech material and combines a number of advantages: Its enormous stability enables significantly thinner wall thicknesses. Titanium is also biocompatible, skin-friendly, easy to care for and durable. Titanium earmolds from AUDIA enable optimum treatment at a high aesthetic level, even for narrow and complex ear canals.



FF 60 FLEXFIT 60 SHORE

(for Elacin® hearing protection)

A soft, elastic silicone in 60 Shore with very high tear resistance and sealing effect. Used especially for ELACIN® hearing protection products.



SW AUDIA-SWIM®

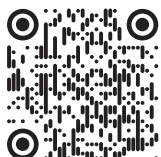
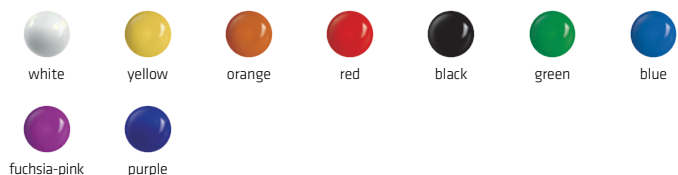
Swim® is super-soft, buoyant silicone. It is specially designed for the requirements of wet environments.

35 Shore and 25 Shore cannot be combined.

SW25 25 SHORE



SW35 35 SHORE



Design your earmold online in our product designer.
Simply scan the QR code.



www.audia-akustik.de/produktdesigner

Note Colours may be subject to production-related fluctuations and deviations. When post-processing titanium, the colour disappears as it is only on the surface. Transparent, transparent-pink and beige do not receive a colour mark-up in the calculation.

ORDERING MATRIX

EARMOLDS

Possible shape, material and surface combinations. When ordering, please use the form no. and abbreviations from the overview as well as the colours and accessories from the catalogue.

	Design	No.																		
			FOTOTEC®	Acrylic	AS 25 Audiasoft (especially soft 25 shore)	AS 40 Audiasoft (medium soft 40 shore)	AS 70 Audiasoft (viscoplastic 60 shore)	THERMOtec®	Titanium	Support	Cymba length	Vent	Hearing tube (standard)	Dry Tube	PP tube	Libbyhorn	Angle	Anchor tube/Expanding coupling	AUDIA quick connect adapter	Multifix/Smart socket
			FOC	TAC	AS25	AS40	AS70	TC7	TIN	AST	CK	NK	S	DT	PP	LH	W	Y	QC	MFx
Comfort	Ring	20	•	•		•	•	•	•		•	•	•	•	•	•	•	•	•	
	Shell	25	•	•	•	•	•	•	•		•	•	•	•	•	•	•	•	•	
	Claw	26	•	•			•	•	•		•	•	•	•	•	•	•	•	•	
	Hook	28	•	•			•	•	•		•	•	•	•	•	•	•	•	•	
	Canal style	29	•	•	•	•	•	•	•			•	•	•	•	•	•	•	•	
	Hollow earmold/Hollow earmold lite	31	•				•	•	•	•		•	•	•	•	•		•		
	HOKA®	39	•					•	•	•		•	•	•		•	•			
RIC	CIC RIC/CIC RIC lite	32	•				•	•	•			•								•
	ITC RIC/ITC RIC lite	36	•				•	•	•	•		•								•
	RIC-IO shell	68	•					•	•			•								•
Mini Tube	CIC click tube/CIC click tube lite	32	•				•	•	•			•								•
	ITC click tube/ITC click tube lite	36	•				•	•	•	•		•								•
	CIC Fix Tube	64	•				•	•				•								•
	ITC Fix Tube	65	•				•	•		•		•								•
Basic	Compact shell/canal-style	01/02	•		•	•	•				•	•	•	•	•	•	•	•		
	Blank made with/without cast		•	•																
Special	Retaining earmold T-mic holder	11	•				•	•			•									•
	Open tube	37	•				•	•			•		•	•						•
	Support earmold	90	•				•	•		•										•
Surfaces	Polished	G	•	•					•											
	Matt	A	•	•				•	•											
	Polished/matt	GA	•	•																
	Glazed	VL	•	•																
	Soft lacquer	SI	•	•	•	•	•													
	Nanopro	NANO			•	•	•													
	NanoScreen™ Lacquer	SCREEN	•	•																

Note

Order the earmold you require easily via EASYORDER. The various options are offered dynamically, depending on the feasible variants.
easyorder.audia-akustik.de

Audia Akustik GmbH
Franz-Mehring-Strasse 13
99610 Sömmerda

Phone: +49 3634 693-0
Fax: +49 3634 693-133

info@audia-akustik.de
www.audia-akustik.de

AUDIA